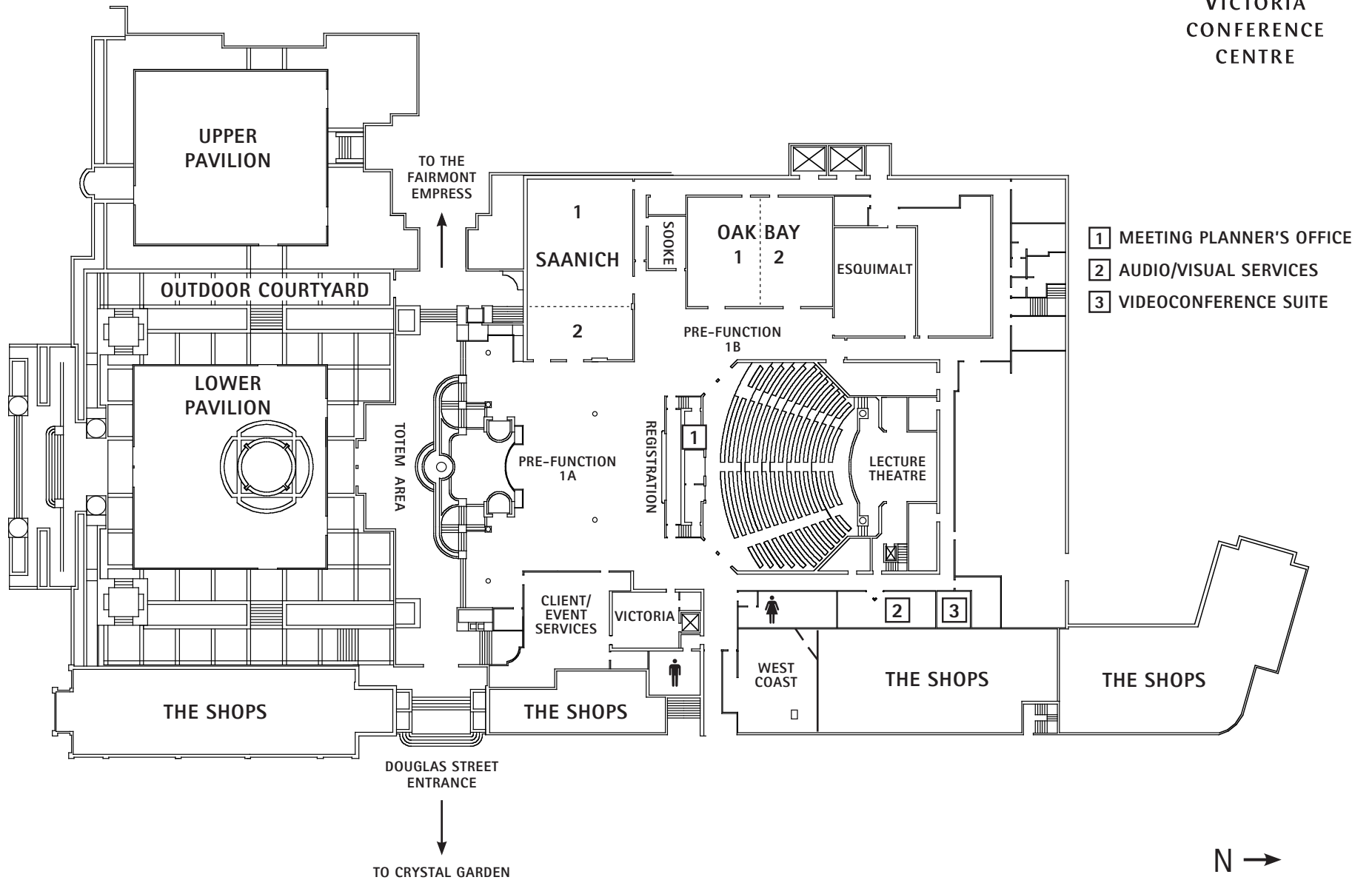


LEVEL ONE | 27,500ft²
2,555m²



VICTORIA
CONFERENCE
CENTRE



		DIMENSIONS AREA			CAPACITY BY SET-UP												
		ft / in	ft ²	m ²	Theatre	Classroom	Boardroom	Hollow Sq	U-Shape	Banquet	Cabaret	Reception	10 x 10	8 x 10	8 x 8	Tabletops	Poster Brd
INCLUDED WITH LEVEL 1 BOOKING	LECTURE THEATRE		3,700 ft ²	344 m ²	400												
	THEATRE STAGE	24' x 24'	576 ft ²	54 m ²													
	SAANICH	61' x 35' x 9'5"	2,135 ft ²	199 m ²	227	132		70	60	150	102	225	10	10	12	25	24
	SAANICH 1	43' x 35' x 9'5"	1,505 ft ²	140 m ²	163	96		54	42	120	72	150	7	7	9	19	15
	SAANICH 2	35' x 18' x 9'5"	630 ft ²	59 m ²	54	36	28			30	24	65	3	3	4	6	6
	SOOKE	18' x 13' x 9'5"	234 ft ²	22 m ²			10			10							
	OAK BAY	50' x 37' x 9'5"	1,850 ft ²	172 m ²	169	96		56	42	120	90	200	8	12	14	20	20
	OAK BAY 1	37' x 25' x 9'5"	925 ft ²	86 m ²	80	54		36	30	60	36	90	3	6	7	10	10
	OAK BAY 2	37' x 25' x 9'5"	925 ft ²	86 m ²	80	54		36	30	60	36	90	3	6	7	10	10
	ESQUIMALT	38' x 28' x 9'5"	1,064 ft ²	99 m ²	96	60		42	34	60	48	110	6	6	6	12	10
	VICTORIA	24' x 16' x 9'5"	384 ft ²	36 m ²	35	18	20			20	12	40	1	1	2	5	2
	PRE-FUNCTION 1	Ceiling ht. 9'10"	6,500 ft ²	604 m ²						240		400	16	20	26	30	34
	PRE-FUNCTION 1A	Ceiling ht. 9'10"	4,875 ft ²	453 m ²						200		300	12	16	22	24	28
	PRE-FUNCTION 1B	Ceiling ht. 9'10"	1,625 ft ²	151 m ²						40		100	4	4	4	6	6
	REGISTRATION		370 ft ²	34 m ²													
	PLANNER'S OFFICE	13' x 6' x 7'	78 ft ²	7 m ²													
ADDITIONAL OPTIONS	TOTEM AREA	110' x 23'	2,530 ft ²	235 m ²							250						
	VIDEOCONFERENCE	17' x 11' x 8'	187 ft ²	17 m ²			10										
	UPPER PAVILION	59' x 65'	3,875 ft ²	360 m ²						290		375	19	24	27	54	36
	LOWER PAVILION	69' x 65'	3,741 ft ²	348 m ²						210		375	13	16	21	40	36
	COURTYARD		7,730 ft ²	718 m ²						340		700					
	WEST COAST ROOM	Ceiling ht. 9'	980 ft ²	91 m ²	50	36	20	18	21	30	24					8	8

Victoria Conference Centre

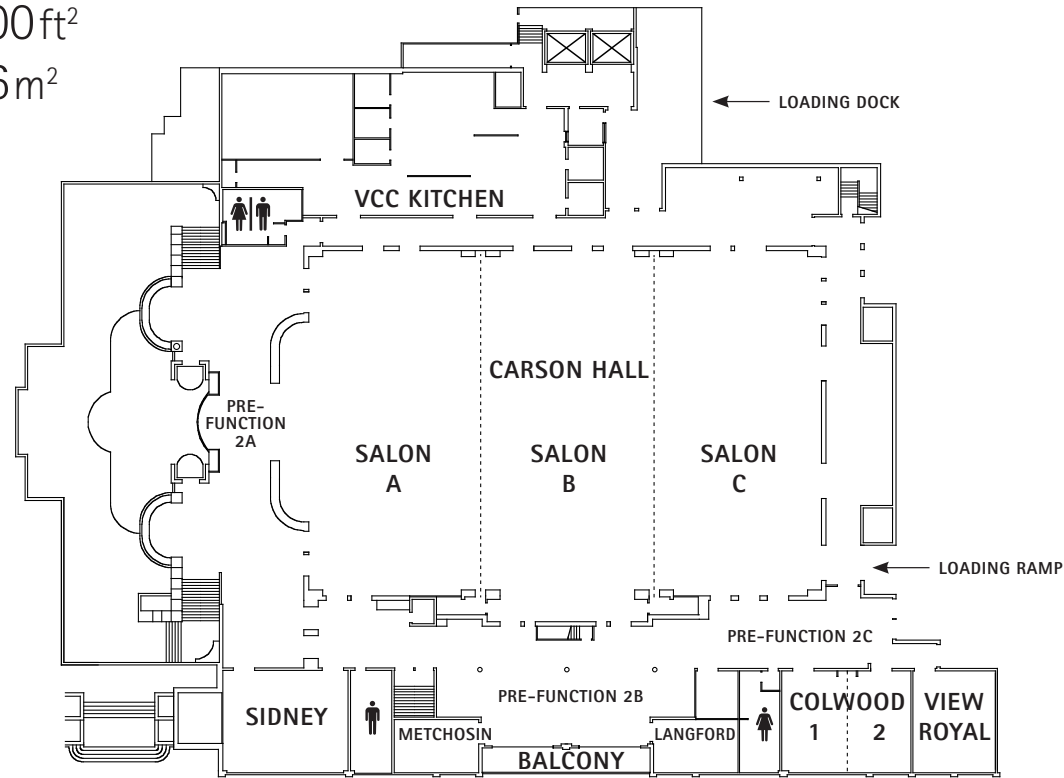
720 Douglas Street Victoria BC Canada V8W 3M7
 1.866.572.1151 or 250.361.1000 Fax 250.361.1099

www.victoriaconference.com

LEVEL TWO | 24,500ft²
2,276m²



VICTORIA
CONFERENCE
CENTRE



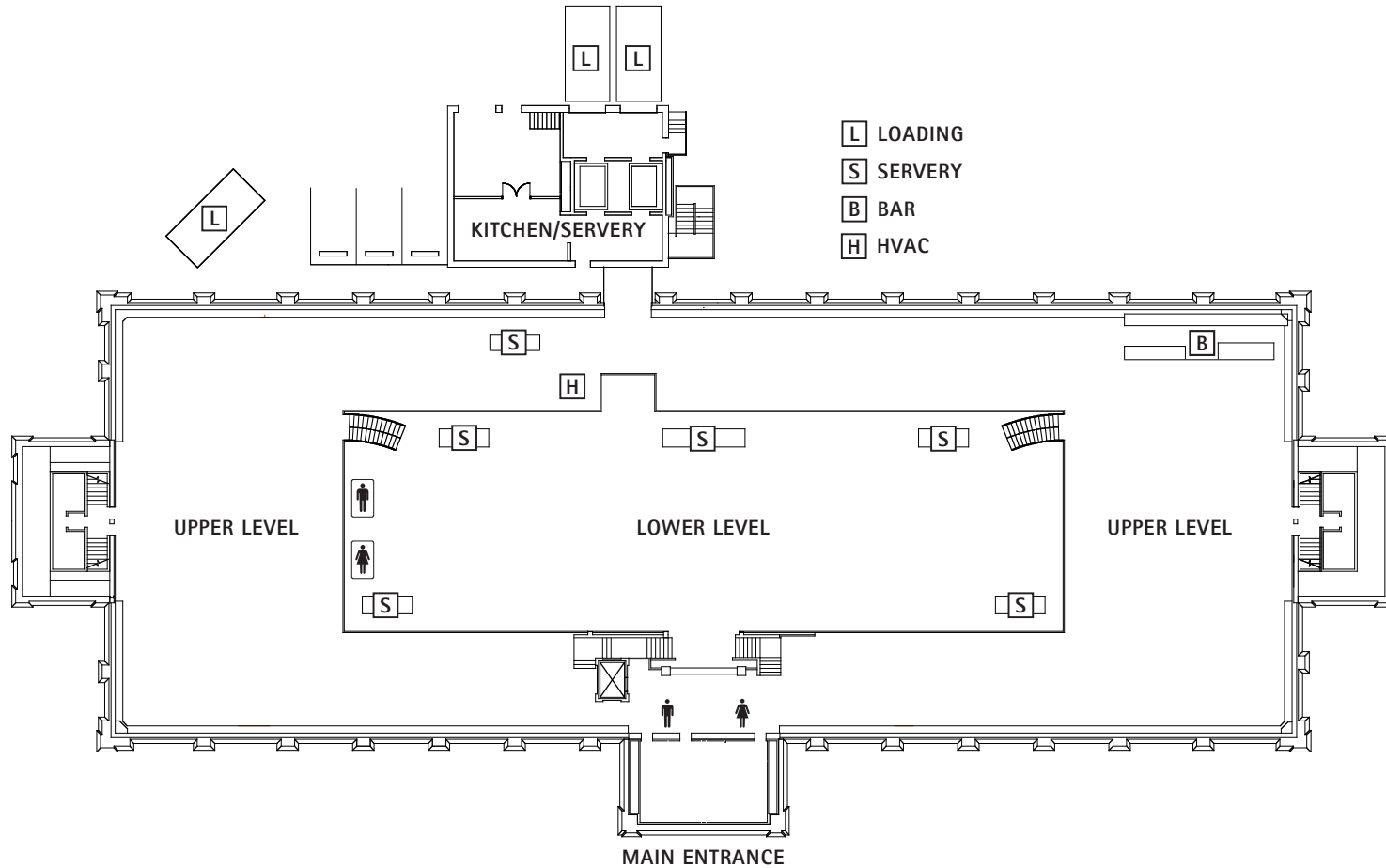
N →
NOT TO SCALE

	DIMENSIONS AREA			CAPACITY BY SET-UP												
	ft / in	ft ²	m ²	Theatre	Classroom	Boardroom	Hollow Sq	U-Shape	Banquet	Cabaret	Reception	10 x 10	8 x 10	8 x 8	Tabletops	Poster Brd
CARSON HALL	145' x 96' x 23'	14,689 ft ² *	1,365 m ² *	1,500	816		138	111	1,010		2,000	80	102	122	190	166
SALON A	96' x 48' x 23'	5,056 ft ² *	470 m ² *	500	264		82	68	370	246	600	29	30	38	56	55
SALON B	96' x 49' x 23'	5,025 ft ² *	466 m ² *	494	270		82	68	340	228	600	25	34	42	64	53
SALON C	96' x 48' x 23'	4,608 ft ²	428 m ²	468	294		82	68	320	216	600	23	32	39	63	50
SALON AB	97' x 96' x 23'	10,081 ft ² *	936 m ² *	1,053	588		112	81	740	462	1,200	61	68	86	134	118
SALON BC	97' x 96' x 23'	9,633 ft ² *	895 m ² *	1,008	540		112	81	730	444	1,200	56	62	81	130	113
SIDNEY	35' x 27' x 10'	945 ft ²	88 m ²	85	60	28	42	34	60	36	110	4	4	6	11	10
LANGFORD	24' x 15' x 9'	360 ft ²	34 m ²	30	18	20			20	12	30	1	2	2	4	4
METCHOSIN	24' x 15' x 9'	360 ft ²	34 m ²	30	18	20			20	12	30	1	2	2	4	4
COLWOOD	35' x 27' x 10'6"	945 ft ²	88 m ²	90	60	28	42	34	60	36	110	4	4	6	10	10
COLWOOD 1	27' x 17'5" x 10'6"	472 ft ²	44 m ²	48	24	20	24	22	30	18	50	2	2	3	7	4
COLWOOD 2	27' x 17'5" x 10'6"	472 ft ²	44 m ²	48	24	20	24	22	30	18	50	2	2	3	7	4
VIEW ROYAL	28' x 24' x 9'	672 ft ²	63 m ²	60	36	20	32	22	40	24	60	3	3	5	7	8
PRE-FUNCTION 2		6,880 ft ²	640 m ²						170		800	15	18	19	44	39
PRE-FUNCTION 2A		2,900 ft ²	269 m ²						90		400	8	10	10	19	20
PRE-FUNCTION 2B		2,800 ft ²	260 m ²						70		400	5	6	7	21	14
PRE-FUNCTION 2C		1,180 ft ²	109 m ²						10			2	2	2	4	5

CRYSTAL GARDEN | 25,000 ft² 2,322 m²



VICTORIA
CONFERENCE
CENTRE



← N
NOT TO SCALE

	AREA		CAPACITY BY SET-UP						
	ft ²	m ²	Banquet	Reception	10 x 10	8 x 10	8 x 8	Tabletops	Poster Brd
CRYSTAL GARDEN	25,000 ft ²	2,322 m ²	1,100	1,100	81	98	124	255	150
UPPER LEVEL	16,196 ft ²	1,505 m ²	700	700	55	55	69	163	75
LOWER LEVEL	7,632 ft ²	709 m ²	400	400	26	43	55	92	75
FOYER/ENTRANCE	1,172 ft ²	108 m ²							